

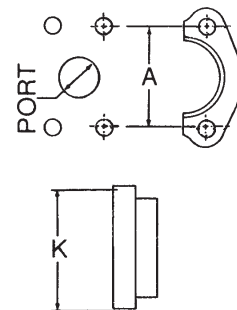


## ISO Connection

### ISO/DIS 6162 4-Bolt Flange\* (cont.)

Size mm (Inch) [Dash]	Bolt Dimensions mm (in)			Bolt Hole Spacing "A" mm (in)	
	Port Hole mm (in)	PN 35/350 Bar (Cd. 61)	PN 415 Bar (Cd. 62)	PN 35/350 Bar (Cd. 61)	PN 415 Bar (Cd. 62)
13 (½) [08]	12.7 (.50)	M8x1.25x25 ⅝-18 x 1¼	M8x1.25x30 ⅝-18 x 1¼	38.10 (1.50)	40.49 (1.57)
19 (¾) [12]	19.1 (.75)	M10x1.5x30 ⅝-16 x 1¼	M10x1.5x35 ⅝-16 x 1½	47.63 (1.88)	50.80 (2.00)
25 (1) [16]	25.4 (1.00)	M10x1.5x30 ⅝-16 x 1¼	M12x1.75x45 ⅞-14 x 1¾	52.37 (2.06)	57.15 (2.25)
32 (1¼) [20]	31.7 (1.25)	M10x1.5x30 ⅞-14 x 1½	M14x2x45 ½-13 x 1¾	58.72 (2.31)	66.68 (2.63)
38 (1½) [24]	38.0 (1.50)	M12x1.75x35 ½-13 x 1½	M16x2x55 ⅝-11 x 2¼	69.85 (2.75)	79.38 (3.13)
50 (2)	50.8 (2.00)	M12x1.75x35 ½-13 x 1½	M20x2.5x70 ¾-10 x 2¾	77.77 (3.06)	96.82 (3.81)

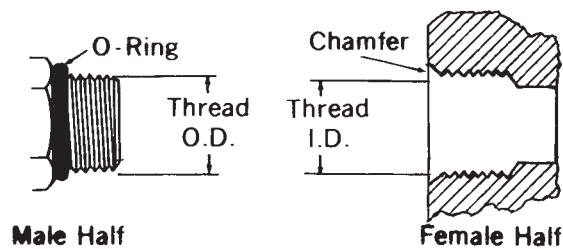
Inch Size	Flanged Head Diameter "K" mm (in)	
	PN 35/350 (Cd. 61)	PN 415 Bar (Cd. 62)
½	30.18 (1.19)	31.75 (1.25)
¾	38.10 (1.50)	41.28 (1.63)
1	44.45 (1.75)	47.63 (1.88)
1¼	50.80 (2.00)	53.98 (2.13)
1½	60.33 (2.38)	63.50 (2.50)
2	71.42 (2.81)	79.38 (3.13)



# ISO Connection

## ISO 6149 Port and Stud Ends with ISO 261 Threads and O-Ring Seal

This port connection is similar to the SAE J514 Straight Thread O-Ring Boss (ORB). The major difference is that this connection uses metric threads. The male connector has a straight thread and an O-Ring. The female port has a straight thread, a machined surface (minimum spotface) and a chamfer to accept the O-Ring. The seal takes place by compressing the O-Ring into the chamfer. The threads hold the connection mechanically.



Metric Thread	Male Thread O.D. mm	Female Thread I.D. mm
M8 x 1	8	7
M10 x 1	10	9
M12 x 1,5	12	10,5
M14 x 1,5*	14	12,5
M16 x 1,5	16	14,5
M18 x 1,5	18	16,5
M22 x 1,5	22	20,5
M27 x 2	27	25
M33 x 2	33	31
M42 x 2	42	40
M48 x 2	48	46
M60 x 2	60	58

\*M14 x 1,5: Recommended for diagnostic port application.